

RELIABLE, FAST, RADIONUCLIDE DETECTION

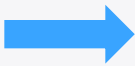
We specialize in developing cutting-edge products for rapid detection and management of nuclear threats. Our technology delivers results in under 60 seconds with specificity and high sensitivity.



Our products show an immediate visual color change when in contact with Uranium, Plutonium, Americium, Cobalt and Primary Transition Metals at trace levels.



Neat
Codeac



Less than
60 seconds



U



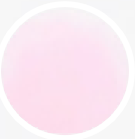
Pu



Am



Co



Primary
transition
metals

OUR PRODUCT RANGE



Nuclear
Detection wipe



Single Use Test



Water Test



Soil Test

SIMPLE AND EASY-TO-USE COLORIMETRIC NUCLEAR DETECTION

1



Wear appropriate PPE, as required by your organization.

2



Tear Single-Use Nuclear Detection Wipe, remove the wipe and collect a sample from the area suspected of contamination.

3



Allow 60 seconds for results and use the Color Standard to identify any colorimetric change or transition. A color change indicates a detection.

Scan for Video



Technical specification:

Nuclear Detection Wipes



A single-use individually wrapped nuclear detection wipe. The inner wipe is saturated with our detection liquid solution, enough for one test, with the outer foil tear protective sleeve. Available in custom sizes upon request.

Detection capability	Uranium, Plutonium, Americium, Cobalt and Primary Transition Metals e.g. U-233, U-234, U-235, U-236, U-238, Pu-239, Pu-241, Pu-242, Am-241, Am-243, Co-60
Detection principle	Colorimetric elemental detection
Sensitivity	Uranium – 2.4ppm Plutonium – 242ppm Americium – 2.4ppm Cobalt – 590ppb
Dimensions	Wet wipe: 8.62cm x 7cm Field pouch: W18.5cm x H11.5cm x 7cm Stand-up pouch: H30cm x W25cm x D12cm
Total Kit Weight (approx.)	400 grams
Color	White, Black or Khaki
Amounts of tests	20 tests – 1 wipe per test
Response time	Under 1 minute
Contents	20 x Nuclear Detection Wipes 4 x pairs of disposable gloves 3 x disposal bags and 5 x bags with results labels 1 x permanent marker 1 x instruction card 1 x color standard card 1 x Compact Pouch (Black, Khaki or Coyote Brown) or 1 x Stand-up Pouch
Available accessories	Replenishment kits available
Sample introduction	Liquid and solid
Transportability	Pocket size
Calibration	Not required
Expiration	2 years
Power supply	Not required
Training required	Not required
Maintenance cost	Nil
Manuals provided	Instruction and Color Standard Card, Safety Data Sheet and Operating Manual

Products are subject to availability. Company reserves the rights from time to time, in its sole discretion and without liability to change, add or withdraw Products.

Simple and Easy-to-use Colorimetric Nuclear Detection



1

Wear appropriate PPE, as required by your organization.



2

Remove dry surface wipe and collect a sample is saturated to the edges.



3

Apply Codeac Liquid Solution to the dry surface wipe one drop at a time until the wipe is saturated to the edges.



4

Observe and wait up to 60 seconds for results. Use the Color Standard to identify any colorimetric change or transition.

Scan for Video



Technical specification: Single-Use Ampules



16 individual single use tests that include our detection liquid solution. This option is an easy use, field ready option. Available in custom sizes upon request.

Detection capability	Uranium, Plutonium, Americium, Cobalt and Primary Transition Metals e.g. U-233, U-234, U-235, U-236, U-238, Pu-239, Pu-239, Pu-241, Pu-242, Am-241, Am-243, Co-60
Detection principle	Colorimetric elemental detection
Sensitivity	Uranium 2.4ppm Plutonium – 242ppm Americium – 2.4ppm Cobalt – 590ppb
Dimensions	Field pouch: H18cm x W14cm x D6.5cm Stand-up pouch: H30cm x W25cm X D12cm
Total Kit Weight (approx.)	500 grams
Color Kit	Field pouch: Black, Olive Drab, Coyote Brown Stand-up pouch: White
Amounts of tests	16 tests – 16 ampules per kit
Response time	Under 1 minute
Contents	16x Single Use Ampules 16 x dry surface wipes with sample identification bags 4x pairs of disposable gloves 3 x disposal bags with result labels 1x permanent marker 1x instruction card 1x color standard card 1x Molle Pouch (Black, Khaki or Coyote Brown) or 1 x Stand-up
Available accessories	Replenishment kits available
Sample introduction	Liquid and solid
Transportability	Pocket size, single-use
Calibration	Not required
Expiration	2 years
Power supply	Not required
Training required	Not required
Maintenance cost	Nil
Manuals provided	Instruction and Color Standard Card, Safety Data Sheet and Operating Manual

Products are subject to availability. Company reserves the rights from time to time, in its sole discretion and without liability to change, add or withdraw Products.